

JULY 2019
HOUSE ^{OF} THE
MONTH

SPECIAL PACKAGE PRICING AVAILABLE THROUGH 12/30/2019

JACOB'S
CREEK III
RANCH

American Dream
Collection Plan

Ritz-Craft
CUSTOM HOMES

• 3 Bedrooms • 2.5 Baths • 2,074 sq. ft.

JACOB'S CREEK III RANCH

American Dream
Collection Plan

JULY 2019 HOUSE OF THE MONTH: DESCRIPTION

AS WITH IT'S SISTER PLANS, THE JACOB'S CREEK III FEATURES BEAUTIFUL VAULTED CEILINGS WITH ABUNDANT NATURAL LIGHT THROUGH THE UPPER GABLE FIXED WINDOWS. A LARGE FOYER LEADS TO THE OPEN LIVING/DINING AREAS WHICH FLOW NICELY INTO THE GRAND AND FUNCTIONAL KITCHEN WITH TALL CABINETRY AND SPECTACULAR ISLAND/BAR. THE BEDROOM "WING" PROVIDES PRIVACY FROM THE MAIN LIVING AREAS AND ALSO THE ADDITIONAL PRIVACY OF A SPLIT-BEDROOM LAYOUT. THE MAIN BATH HAS A DIVIDING DOOR FOR SHARED USE AND THE NEARBY LAUNDRY ROOM IS CONVENIENTLY LOCATED BETWEEN ALL OF THE BEDROOM AREAS. THE MASTER SUITE INCLUDES TWO LARGE WALK-IN CLOSETS AND CAN INCLUDE AN OPTIONAL EXTERIOR DOOR FOR ACCESS TO A REAR DECK OR PATIO. THE MASTER BATH FEATURES LARGE INDIVIDUAL VANITY AREAS WITH A TOWER CABINET FOR LINEN AND BATH ITEM STORAGE ALONG WITH A SPACIOUS, FULL-TILE WALK-IN SHOWER. WITH GREAT REAR-FACING VIEWS FROM MOST ROOMS, THE DRAMATIC JACOB'S CREEK III'S DRAMATIC INTERIOR, OPEN AND BRIGHT WINDOW FEATURES AND SPACIOUS FAMILY AREAS MAKE IT A GREAT CHOICE FOR ENTERTAINMENT AND EVERY-DAY ENJOYMENT.

JACOB'S CREEK III RANCH

American Dream
Collection Plan

JULY 2019 HOUSE OF THE MONTH: INCLUDED EXTERIOR FEATURES

- Vaulted ceiling trusses through Living/Dining Rooms (12/12 pitch roof in vaulted areas--balance of home includes areas of 6/12 pitch roof and 9/12 pitch)
- (6) fixed pane windows for vaulted ceiling gables (no grids)
- 4 over 1 window grids throughout
- Recessed front entry
- (2) pairs of louvered shutters
- 3-1/2" Azek (or equal) trim for exterior of 2 foyer windows
- (1) additional front porch light
- Full shingled eave return at large front gable
- Vinyl Board & Batten siding for 3-sides of recessed entry area and for large gable as shown
- Vinyl NORTHWOODS shakes for upper area of large gable as shown
- Azek (or equal) 5-1/2" trim board between shakes and board & batten
- Azek (or equal) 11-1/4" trim board at sill area of front as shown
- RCDU front door (primed--paint optional)

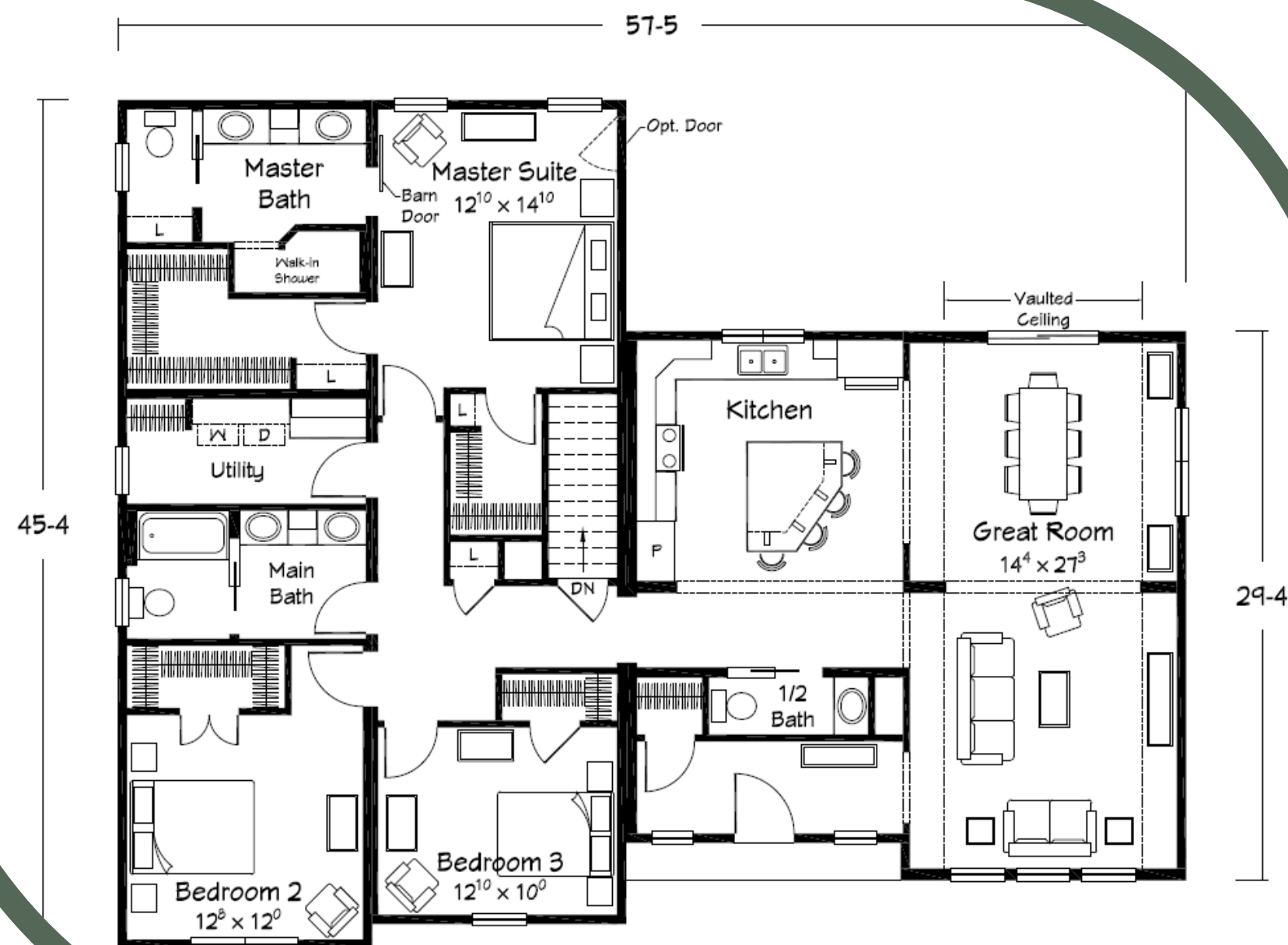
Please Note: The vaulted ceiling area of this plan requires site completion of the interior ceiling. Sheetrock or other finish materials for the Living/Dining rooms are not included and must be provided and installed on site. The connecting roof area at 6/12 pitch is required with this plan for tie-in to the adjacent roof sections without over-peaking. The large front gable of the Living Room requires foundation support per Ritz-Craft's provided foundation drawings.



JACOB'S CREEK III RANCH

American Dream
Collection Plan

JULY 2019 HOUSE OF THE MONTH: INCLUDED INTERIOR FEATURES



Jacob's Creek III
2074 sq ft First Floor Living

- 8'-6" CEILING HEIGHT THROUGHOUT FLAT CEILING AREAS
- TALL/DEEP REFRIGERATOR OVERHEAD CABINET
- TALL/DEEP PANTRY CABINET
- 36" HEIGHT KITCHEN WALL CABINETS
- 6) RECESSED CEILING LIGHTS IN KITCHEN (INCLUDES 1 OVER SINK)
- (2) HANGING PENDANT LIGHTS OVER ISLAND BAR
- 3-DRAWER POTS & PANS DRAWER CABINET IN ISLAND
- DESIGN ELEMENTS 6" X 48" LVP FLOORING IN FOYER, LIVING, DINING, KITCHEN, 1/2 BATH AND HALL BETWEEN 1/2 BATH AND KITCHEN
- BASE AND WALL CABINETS PER PLAN IN LAUNDRY WITH VENTILATED WOOD SHELVING OVER W/D AND IN HANGING AREA
- (3) VENTILATED WOOD LINEN SHELVES IN MASTER BATH
- "MINI-INFINITY" FULL-TILE, WALK-IN SHOWER IN MASTER BATH
- SNAP-STONE CERAMIC TILE FLOORING IN MASTER BATH
- 36" GLIDING BARN DOOR AT MASTER BATH ENTRY
- POCKET DOORS AS SHOWN

JACOB'S CREEK III RANCH

American Dream
Collection Plan

